

LOCAL DEVELOPMENT STRATEGIES: WE CAN DO MORE TOGETHER!

State of Play of LEADER/CLLD In the New Programming Period in the EU

Gaya Ducceschi, European Network for Rural Development

Lithuania, Dubingiai – 22-23 September 2016

Topics



LEADER
State of
Play

**ENRD support
to LEADER**

LEADER State of Play

A new framework for LEADER

New regulatory framework– some key improvements

➤ LEADER Strategies:

- ✓ LEADER start-up kit for new LAGs
- ✓ Multi-fund CLLD strategies
- ✓ Preparatory support includes support for small pilot projects
- ✓ Running cost and animation up to 25% of total public expenditure of the CLLD strategy

➤ ENRD LEADER Focus Group recommendations are integrated:

- ✓ FG 1: Implementation of the bottom up approach for LEADER
- ✓ FG 2: Preserving the innovative / experimental character of LEADER
- ✓ FG 3: Implementation of the ‘cooperation measure’ in LEADER
- ✓ FG 4: Better Local Development Strategies



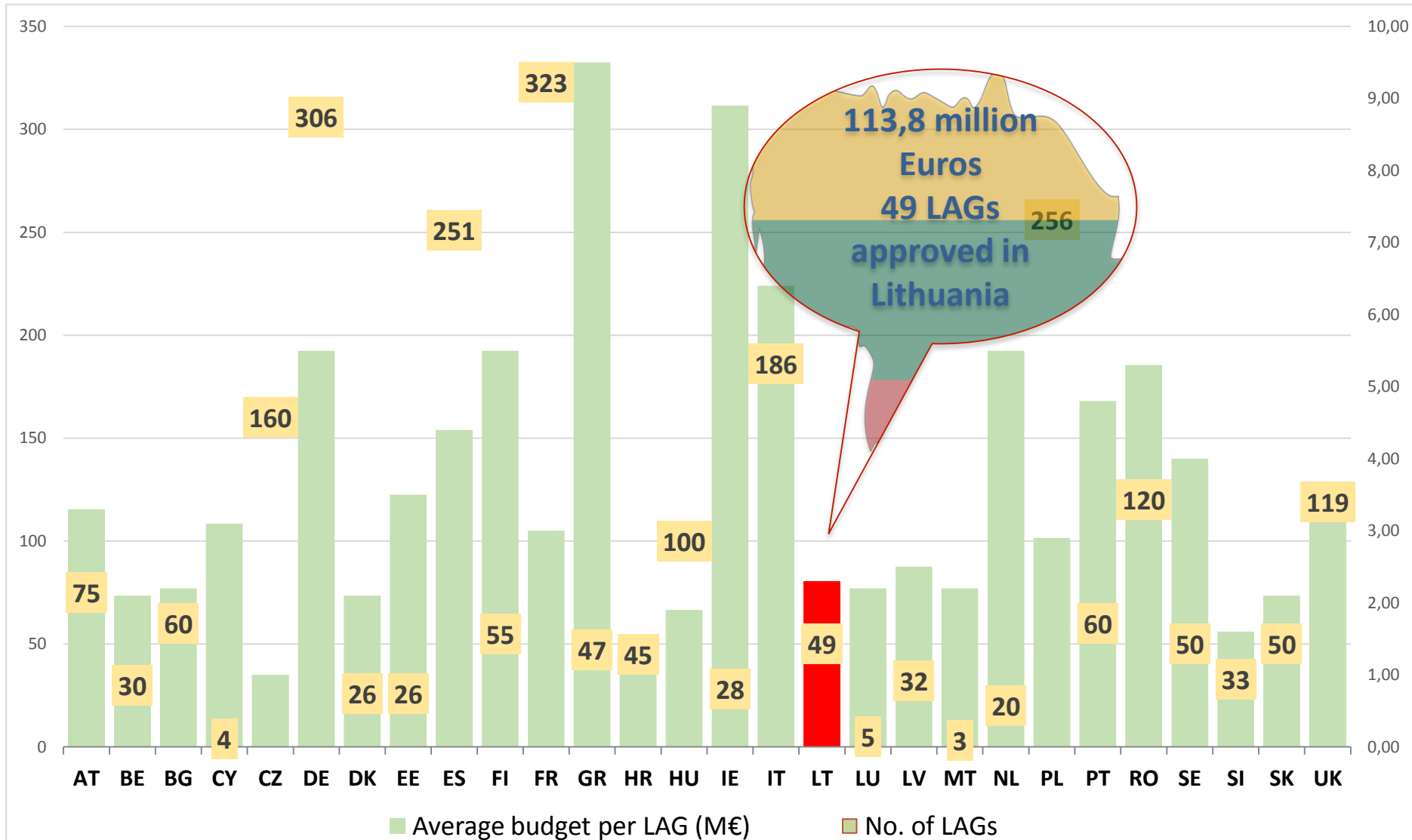
KEEP CALM,
I'M ONLY
A QUARTER OF A
CENTURY
OLD

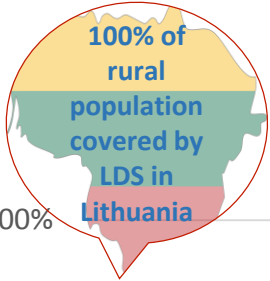
LEADER at a glance...

Measure 19 (LEADER/CLLD)

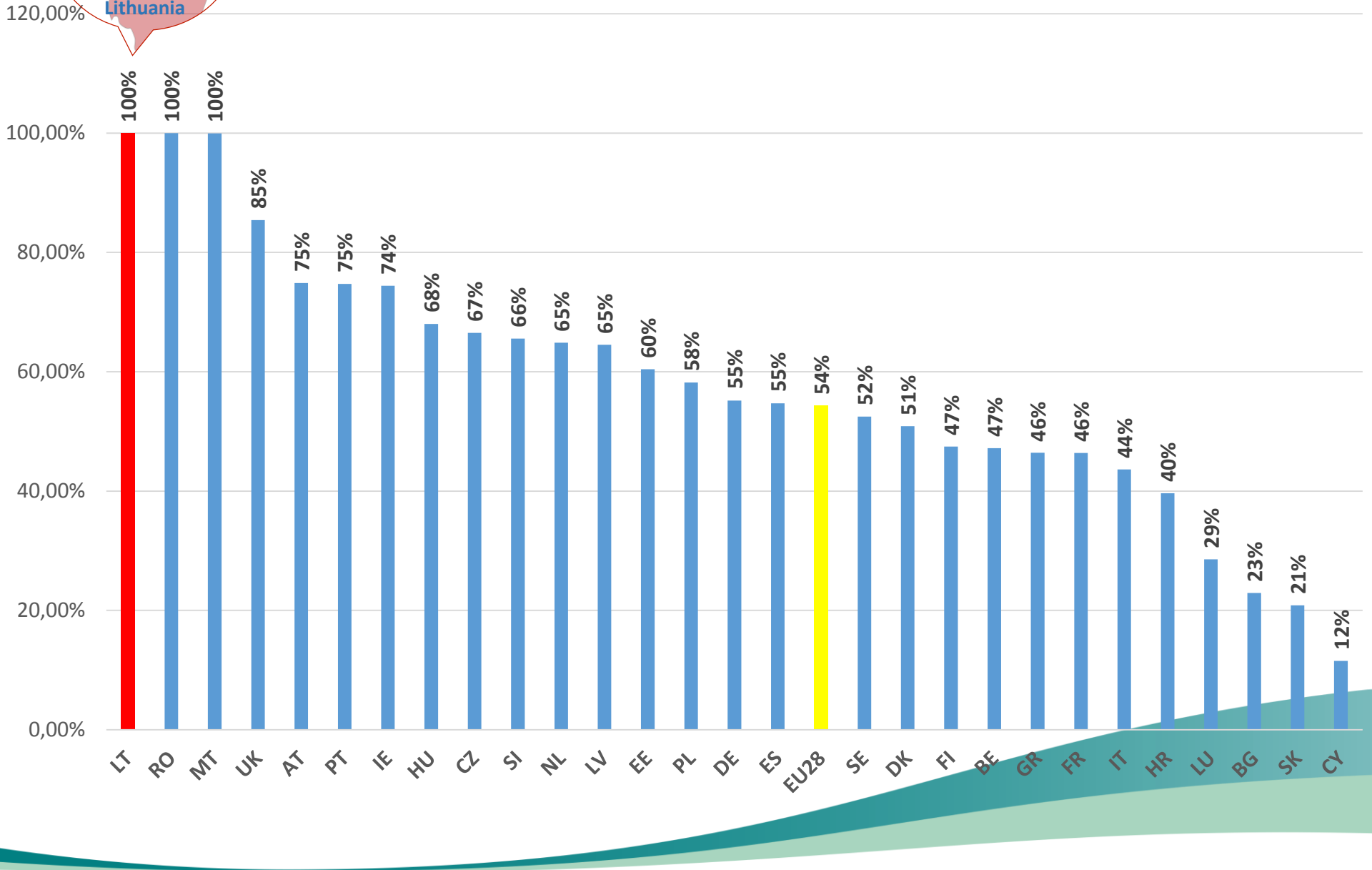
- Implemented in 109 RDPs
- Expected total number of LAGs: **2513**
- Total public funding allocated: **€ 9.7 billion**
- Planned number of jobs created: **44.400**

Expected number of LAGs and average budget (total public)

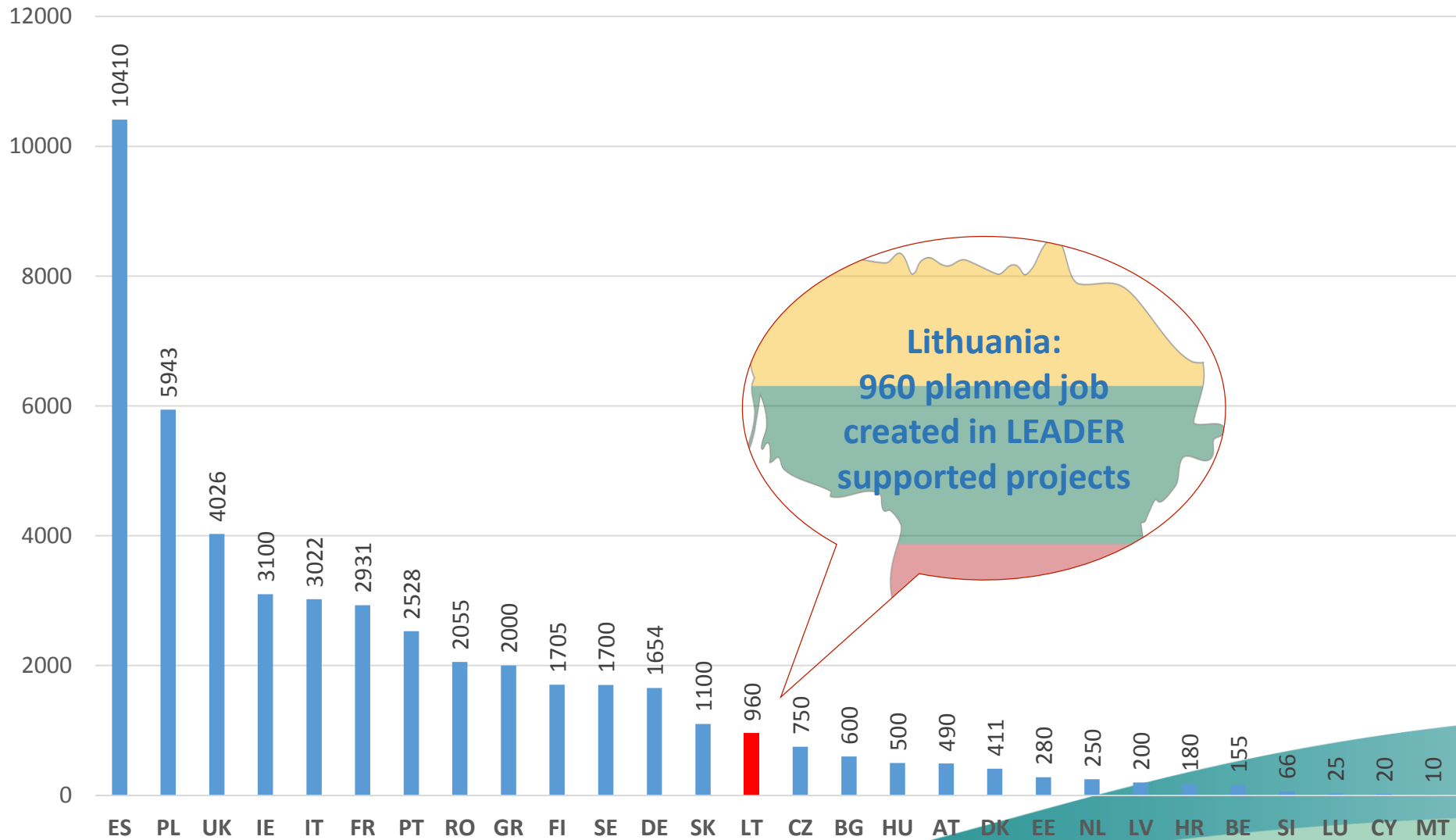




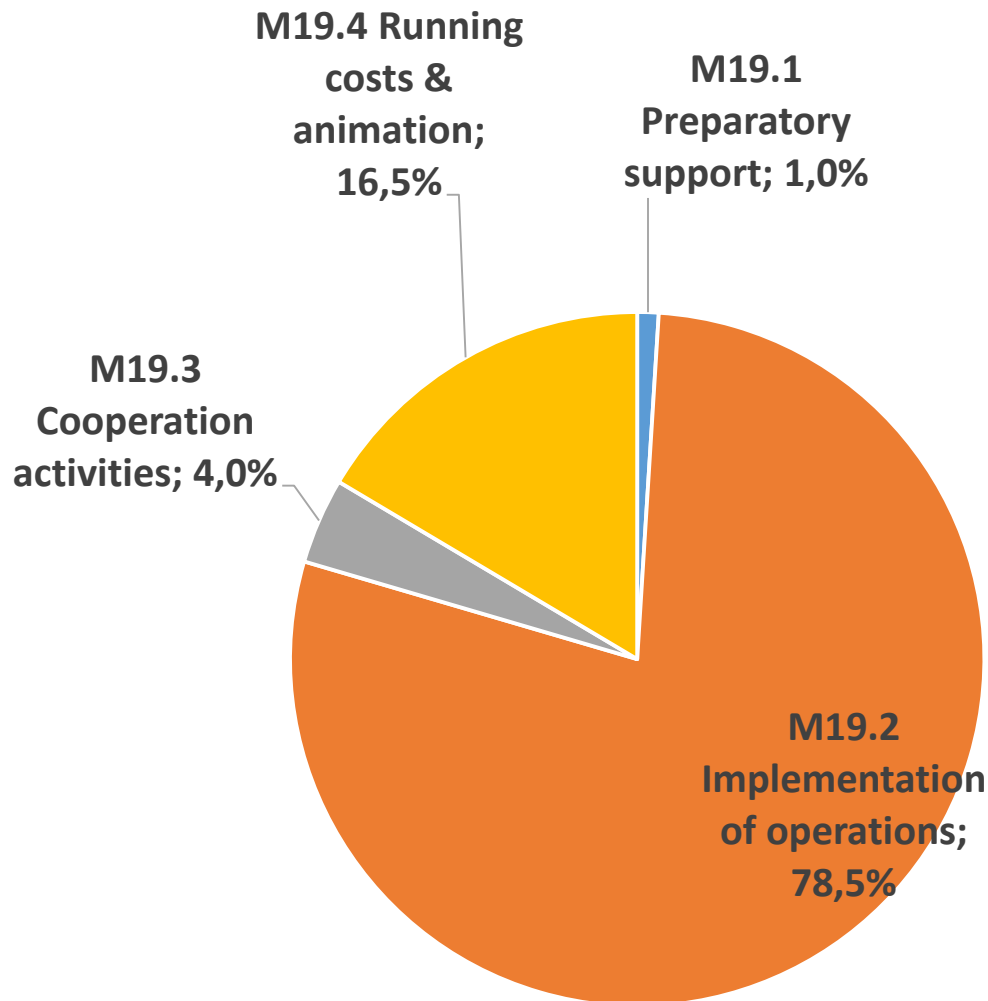
TARGET: percentage of rural population covered by local development strategies



TARGET: Jobs created in LEADER supported projects



Measure 19 (LEADER/CLLD) - EU28 total public budget allocation by sub-measures



Simpler and more effective CLLD

ENRD support to LEADER

- Energise Sub Group
- Demand led initiatives
- Simplification and flexibility
- Info and analysis
- Links to other initiatives
- Regenerate LEADER

Some key findings of the ENRD RDP screening

- In 54 RDPs LEADER needs and priorities relate to **Employment, local economy, jobs.**
- The **top-5 themes** that LEADER is expected to contribute to are
 - Employment, local economy and diversification,
 - Resource efficiency, renewable energy and climate,
 - Social inclusion and poverty reduction,
 - Cultural heritage and landscape,
 - Agriculture, local food and production systems.

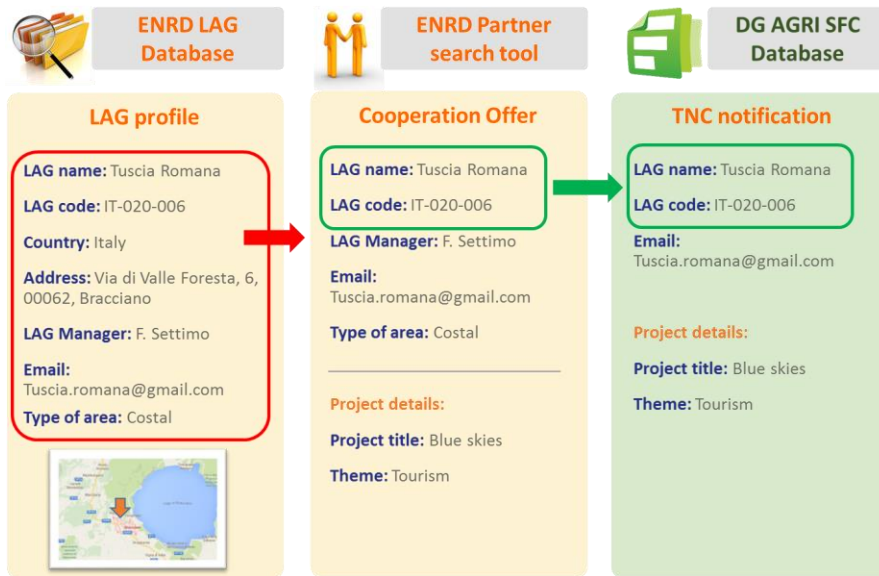


©European Union

Tools and guidance

- DG AGRI guidance for implementation of the LEADER Cooperation activities - **translated into all EU languages!**

- **LAG database & partner search tool**



- ✓ Specification completed: designed with DG AGRI and with the other ESI-fund DGs - to be compatible across all funds /DGs
- ✓ Cooperation offer document published on the ENRD website
- ✓ Web development of partner search tool to be launched soon

Cooperation factsheets



LEADER/CLLD Cooperation Survey

1. ENRD Survey on "Preparation and implementation of the Local Action Group's cooperation activities"

By filling in this questionnaire, you are making an important contribution to the collection and analysis of information on how the "LEADER Cooperation" sub-measure will be implemented in EU Member States. The results will feed directly into the RDP LEADER cooperation fiches and other cooperation tools which the Contact Point will prepare and publish on the ENRD website to support future joint work on LEADER cooperation. Please fill in the questionnaire and submit your results by 3 June 2016. Thank you for your contribution.

- ✓ Based on ENRD LEADER cooperation **survey** data
- ✓ 47 RDP responses to ENRD survey available / under analysis (as of 8 August 2016) - 20 EU MSs featured

- ✓ Development of **factsheets**
- ✓ Validated factsheets to be published on ENRD website by December 2016

Workshops and events

➤ LEADER / CLLD Events & Meetings

- ✓ LEADER/CLLD Conference: Milan, Italy, September 2015
- ✓ LEADER/CLLD Sub-group: Brussels, February 2016
- ✓ Umbrella projects workshop: Brussels, February 2016
- ✓ LEADER Simplified Costs workshop: Brussels, January 2016
- ✓ LEADER Social Inclusion workshop: March 2016
- ✓ ENRD workshop on LEADER Cooperation: Brussels June 2016

➤ Upcoming events

- ✓ LINC 2016 (27-29 September, Hungary)
- ✓ Joint DGs CLLD Seminar: Båstad Sweden December 2016
- ✓ LEADER/CLLD Sub-group: Brussels, February 2017
- ✓ LEADER smart specialisation seminar 2017

LEADER Cooperation Working Group



©ENRD CP

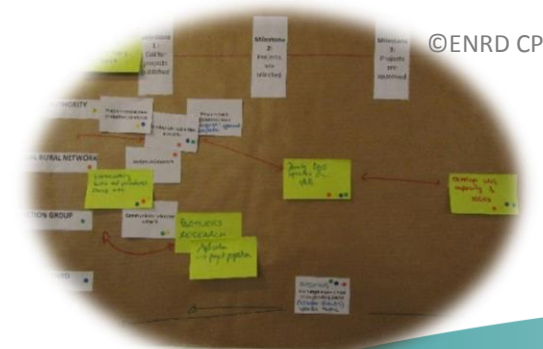
- **Practitioner-Led Working Group (PWG)** on LEADER Cooperation set up at the ENRD workshop on LEADER cooperation (June 2016)
- **Members:** MAs, ENRD CP, DG AGRI, ELARD, LAGs
- **1st PWG Steering Group meeting** held in August 2016

➤ Major themes

- ✓ Harmonisation of procedures and rules
- ✓ Capacity building for Local Action Groups

➤ Planned key **outcome:** updated, enhanced DG AGRI guidance to cooperation

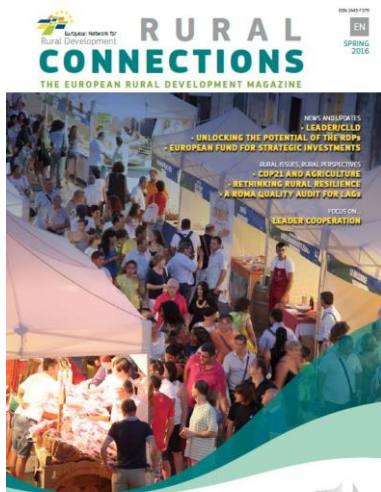
➤ **Next:** LAG, **launch of PWG at LINC 2016** (Dabas, Hungary) to map challenges from the LAG perspectives / finding LAG members for the PWG



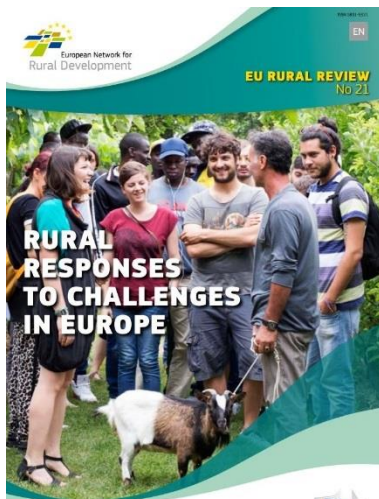
©ENRD CP

Upcoming ENRD events and publications

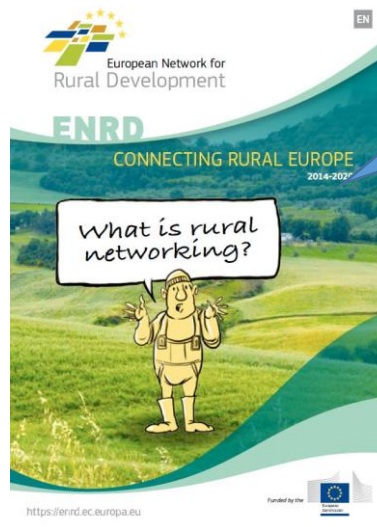
- **Båstad Sweden, 6-8 December 2016**
Achieving results the CLLD way: Putting the method to work.
- **Subscription to ENRD Publications**
If you wish to subscribe, please write to subscribe@enrd.eu



<https://enrd.ec.europa.eu>



<https://enrd.ec.europa.eu>



<https://enrd.ec.europa.eu>



Available in 23
languages!

THANK YOU FOR YOUR ATTENTION!